

Energy Efficiency Case Study

Alabama SAVES 1% Fixed Rate Capital

The project was financed through an innovative 1% fixed rate loan and subsidy program available through the state called Alabama SAVES. The program allows for finance terms of up to 10 years and is often times structured so that the energy savings generated from the project are greater than the monthly loan payment.

About Semco

If your business is interested in cutting energy costs or financing an energy efficiency project through Alabama SAVES, SEMCO can help you. We help businesses save energy through providing turnkey energy saving solutions like LED lighting, heating and cooling controls and more. Just reach out below for additional information.

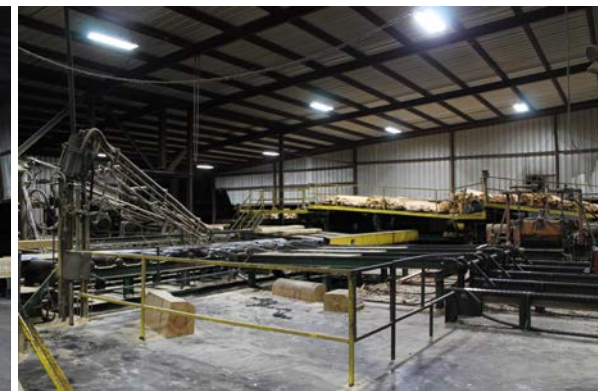
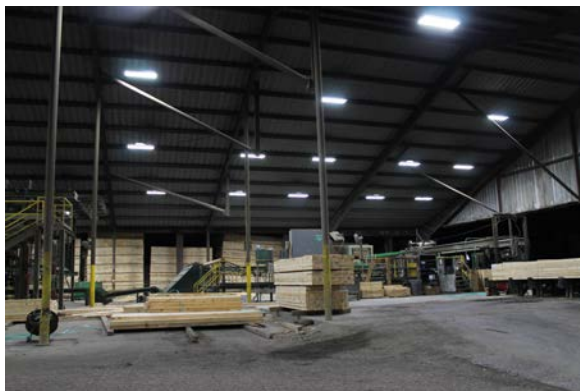


www.theseemco.com
P.O Box 4724
Gulf Shores, AL 36547
(251) 752-8548



Jasper Lumber Company

This project involved upgrading the interior and exterior lighting in Jasper Lumber's corporate offices, main plant, chip mill and shavings plant from antiquated T12/ T8 fluorescent and HID fixtures to energy efficient LED lighting. The LED upgrade will cut Jasper's lighting energy usage by 61% and is expected to eliminate lighting maintenance costs for more than 11 years, as most of the LED fixtures installed are rated to last 100,000 hours. While energy and maintenance savings are clear benefits of the upgrade, an increase in foot-candles throughout the entire plant will also help create a safer working environment for the plants employees. On average, light levels were increased by 10%-20% depending on the area.



Annual Savings

(calculations provided courtesy of SEMCO)

- Energy Savings \$98,289
- Displaced Energy 1,256,434 kWh
- Displaced Demand 194 kw

Impact of Upgrade

- Simple Payback 3.12 yrs
- \$13,000+ annual positive cash flow

From the Vice President

"The new LED lighting has made our plant brighter and whiter than it's ever looked. SEMCO was helpful throughout the entire process. We are very happy with the results and are looking forward to experiencing the energy and maintenance savings for years to come." Roy Beall

Environmental Equivalents

- 2,015 Barrels of oil saved
- 311 Tons of waste sent to landfill
- 97,488 Gallons of gas not burned
- 79 Homes powered (1 yr.)
- 182 Cars taken off the road (1 yr.)
- 4.6 Railcars of coal not burned